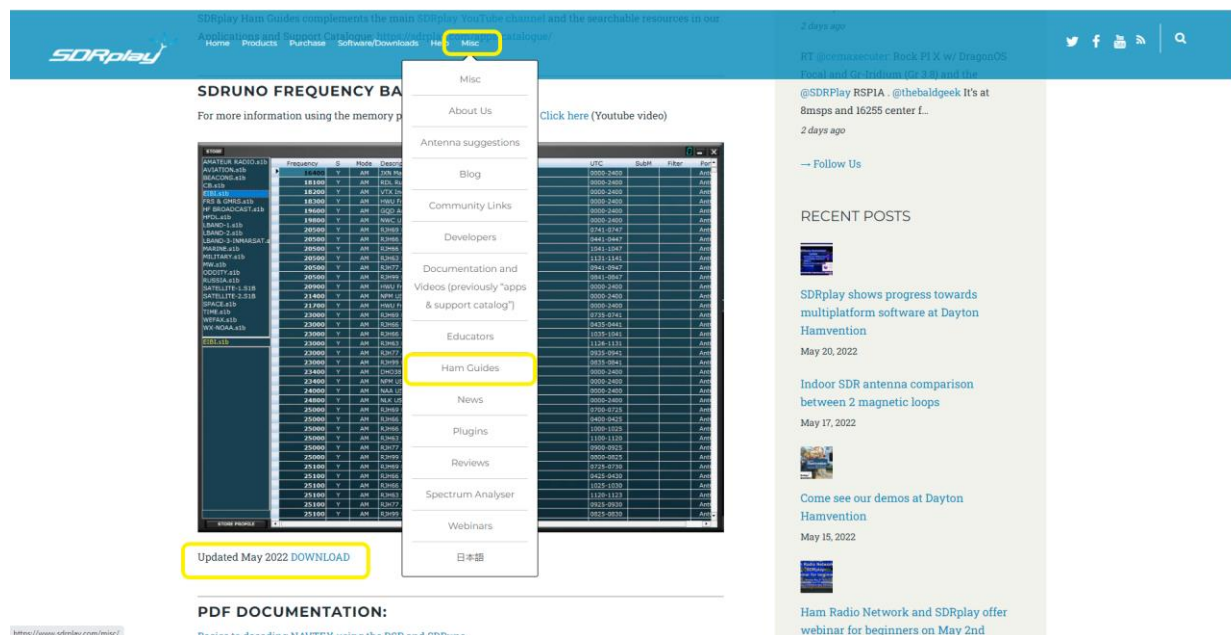
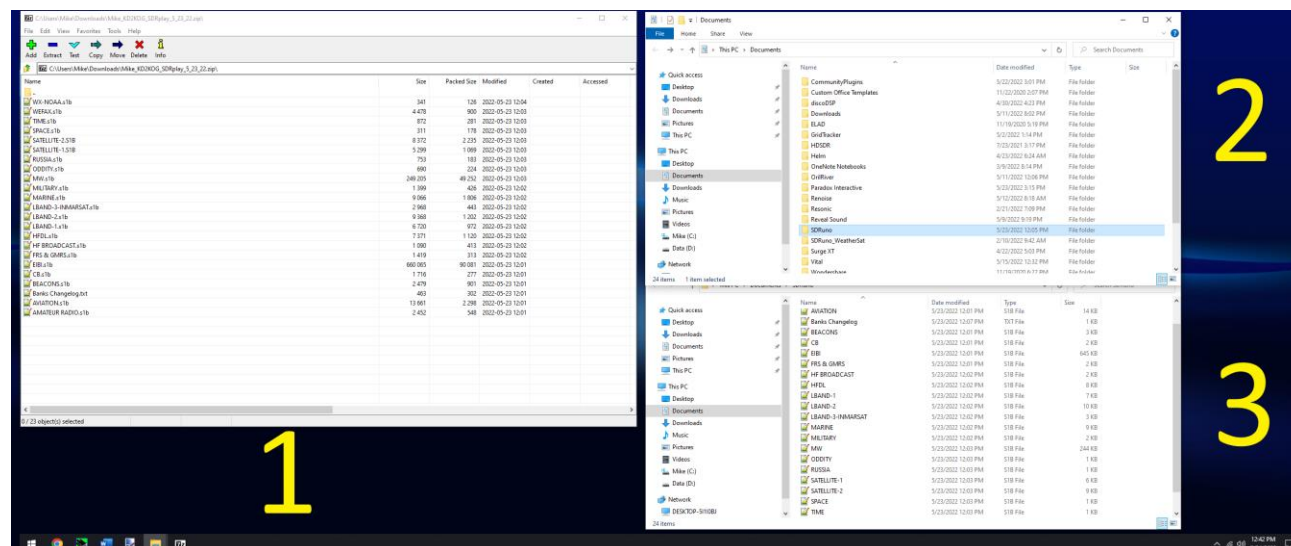




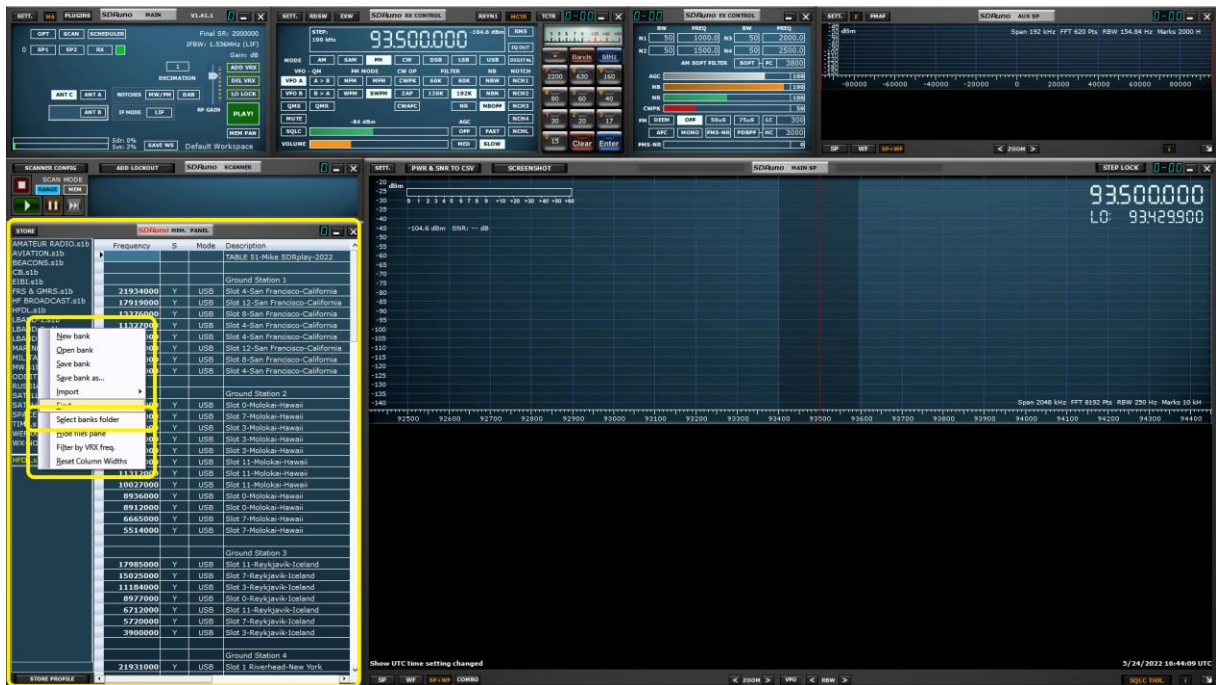
Before we begin, all changes are listed in the changelog section of this document (last page). Returning users should always check the changelog for updated information.



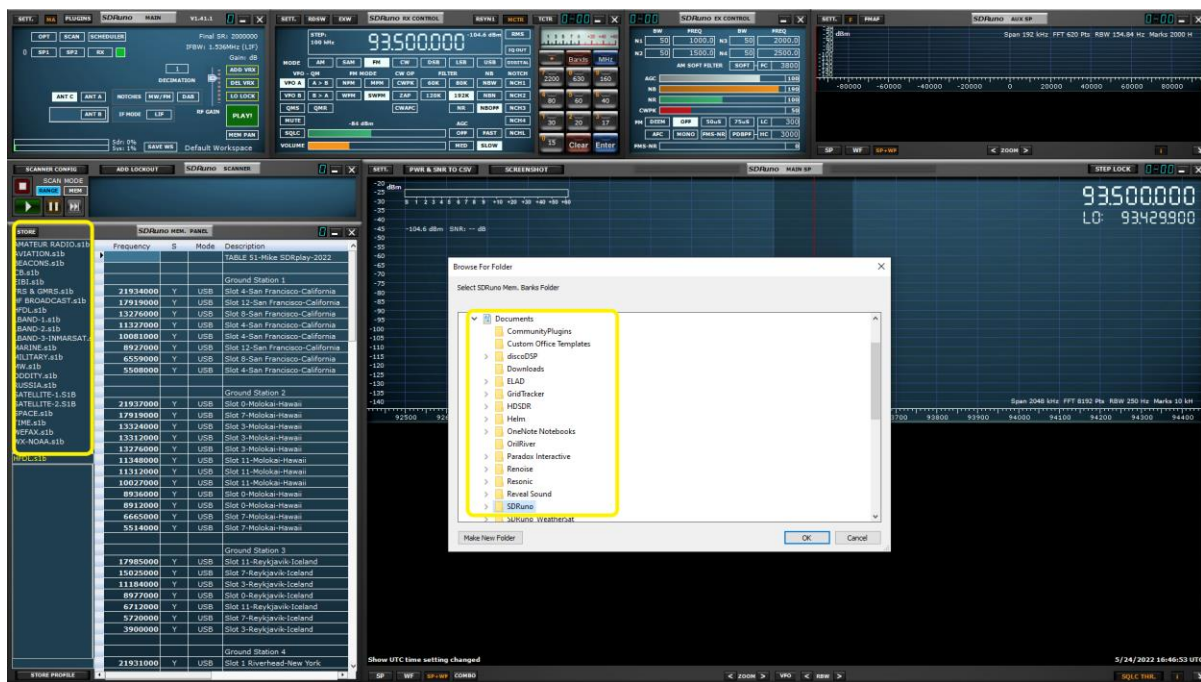
New users, visit [SDRplay.com](http://SDRplay.com), click Misc and select Ham Guides. Scroll down and click download to begin downloading the latest SDRuno memory banks .zip file.



Make a folder inside of My Documents and name it SDRuno. Extract the contents of the zip file you downloaded from SDRplay.com and place it into the SDRuno folder within My Documents.



Launch SDRRuno. Right click in the upper left section of the memory panel, click “select banks folder”



Navigate to the My Documents folder, click on the SDRRuno folder, click “OK”. All banks will load into SDRRuno.



The screenshot shows the SDRSharp software interface. A file explorer window is open, displaying a list of files in the directory C:\Users\Mike\Downloads\Mike\_XD2ROG\_SDRplay\_5\_23\_22.zip. The files are listed with columns for Name, Size, Packed Size, Modified, Created, and Accessed. A yellow arrow points to the file 'WU-N0AA.s1b' in the list. The background shows the SDRSharp interface with a spectrum display at the top and a waterfall display at the bottom. The frequency is set to 88.100000 MHz. The waterfall display shows a signal at 88.100000 MHz with a bandwidth of 10 kHz. The time is 5/23/2022 15:07:30 UTC.

Name	Size	Packed Size	Modified	Created	Accessed
WX-N0AA.s1b	341	126	2022-05-23 12:04		
WETA.s1b	4,478	900	2022-05-23 12:05		
WME.s1b	872	281	2022-05-23 12:05		
WAC.s1b	311	128	2022-05-23 12:05		
SATELLITE-2.51b	8,372	2,235	2022-05-23 12:05		
SATELLITE-1.51b	5,298	1,069	2022-05-23 12:05		
RUSIA.s1b	753	183	2022-05-23 12:05		
ESPAN.s1b	690	224	2022-05-23 12:05		
MW.s1b	349,205	49,252	2022-05-23 12:05		
MILITARY.s1b	1,399	416	2022-05-23 12:02		
MARINE.s1b	9,046	1,856	2022-05-23 12:02		
UBAND-3-ARMARISAT.s1b	2,748	443	2022-05-23 12:02		
UBAND-2.51b	9,358	1,202	2022-05-23 12:02		
UBAND-1.s1b	8,780	972	2022-05-23 12:02		
WFDL.s1b	7,371	1,120	2022-05-23 12:02		
WFOBROADCAST.s1b	1,096	413	2022-05-23 12:02		
WFS-ARMARISAT.s1b	1,419	313	2022-05-23 12:02		
WFL.s1b	680,065	90,081	2022-05-23 12:02		
WFL.s1b	1,716	277	2022-05-23 12:01		
WFL.s1b	2,479	901	2022-05-23 12:01		
WFL.s1b	483	392	2022-05-23 12:01		
WFL.s1b	13,661	2,286	2022-05-23 12:01		
WFL.s1b	2,452	548	2022-05-23 12:01		

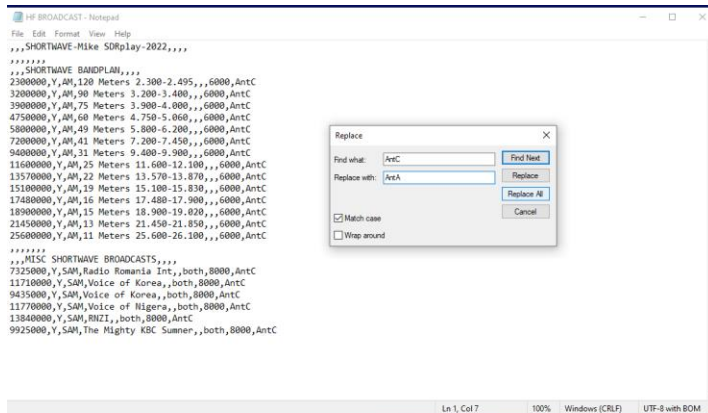
23 / 23 object(s) selected 990.518 2.453 2022-05-23 12:01:14

WETA WU-N0AA

RSP Standard (Low-IF, SR: 2000000 Hz, LO: 88029900 Hz, RFStation: 0)

5/23/2022 15:07:30 UTC

## ADJUSTING THE INPUT:



Notepad can bulk edit s1b files using the find and replace function found in the Edit menu option. You can change all the antenna inputs to better suite your environment. AntA, AntB, AntC or the HiZ note per device input specifics listed below.

RSP2 using the Hi-Z input (HiZ) is 30 MHz MAX.

<https://www.sdrplay.com/docs/RSP2andRSP2proDatasheetv2.2.pdf>

RSPDuo using the Hi-Z input (HiZ) is 30 MHz MAX.

<https://www.sdrplay.com/wp-content/uploads/2018/05/RSPduoDatasheetV0.6.pdf>

RSPdx using the BNC input (AntC) is 200 MHz MAX.

<https://www.sdrplay.com/resources/RSPdxDatasheet.pdf>

All other devices (AntA or AntB) is the full receive range.

## ADDITIONAL INFORMATION:

YouTube

Search

SDRuno basics, The memory panel.

6,710 views • Oct 5, 2019

117 DISLIKE SHARE DOWNLOAD CLIP SAVE

SDRplayHamGuides

Quick overview of the SDRuno memory panel and SDRuno memory banks per users request.

This is one of many video guides from SDRplay - makers of the RSP family of SDR radios. See the [SHOW MORE](#)

32 Comments SORT BY

SDRuno, the basics.  
SDRplayHamGuides  
57K views • 3 years ago

SDRuno, free frequency banks  
SDRplayHamGuides  
5.1K views • 1 year ago

SDRuno Memory Panel part 1 of 2 (MV005)  
SDRplay Software Defined Radio Re...  
12K views • 5 years ago

SDRuno basics, shaping the sound.  
SDRplayHamGuides  
9.7K views • 3 years ago

SDRuno v1.40.2 BCS Black Cat System plugin.  
SDRplayHamGuides  
11K views • 1 year ago

Monitoring Multiple Bands with SDRuno (AN007)  
SDRplay Software Defined Radio Re...  
27K views • 4 years ago

SDRuno v1.40.1 basics  
SDRplayHamGuides  
9.2K views • 1 year ago

SDRuno basics, virtual audio cable  
SDRplayHamGuides  
5.7K views • 1 year ago

SDRuno basics, Fldigi &

More information about the Memory Panel is available by visiting the following URL's  
<https://youtu.be/TzLhOci-BjQ> and starting on page 68 of the SDRuno manual.  
[https://www.sdrplay.com/docs/SDRplay\\_SDRuno\\_User\\_Manual.pdf](https://www.sdrplay.com/docs/SDRplay_SDRuno_User_Manual.pdf)

## CHANGELOG

1/24/23:

- Updated EIBI to the BC-B22 schedule.
- Cleaned up HF-BROADCAST
- AMATEUR RADIO is now AMATEUR RADIO USA
- CB is now CB USA
- FRS & GMRS is now FRS & GMRS USA
- WX-NOAA is now WX-NOAA USA
- UK 70 CM HAM added
- UK 2M HAM added
- UK FIREGROUND added
- UK FRS
- UK GMRS added
- UK PM466 added
- UK OUTSIDE added

5/31/22:

EIBI updated to BC-A22